

## RX-8 Front Bumper Removal

### Tools Required:

- Flat head screwdriver
- Phillips head screwdriver - "stubby"
- 10mm socket & ratchet or 10mm open end wrench

**Estimated time for completion:** 1 hr

**People required:** 1

### REMOVAL INSTRUCTIONS

1. Raise the hood of the car. Turn steering wheel as far as possible to one side.
2. Remove the upper plastic panel as shown in photo 1. Use a small flat head screwdriver to remove the six (6) plastic clips. Remove the panel, which now reveals the bumper upper retaining fasteners. (Gently pry the top of the plastic clip off with a small screwdriver, then remove the lower portion from the bumper.)
3. Remove the the four (4) 10mm head bolts and two (2) plastic clips from the top of the bumper. (Gently pry the top of the clip off with a small screwdriver, then remove the lower portion from the bumper.)
4. Proceed to the wheel wells and using the small Phillips head screwdriver, remove the plastic clips along the edge of the bumper as shown in photo 3.
5. Remove the sheet metal screws (1 screw per lamp) that retain the corner lamps, then disconnect the electrical connectors. See photo 4.
6. Remove the ten (10) sheet metal screws from the front bottom edge of the bumper. Note the sizes of these screws for the later replacement. See photo 5 for location of these screws.
7. Disconnect the electrical connectors from the fog lights by pulling the the bottom plastic panel downward and reaching up under the bumper to access the electrical connectors.
8. Gently remove the bumper by "peeling" the sides away from the chassis (starting with the corners nearest the corner lamps), then pull the bumper forward.

Photo 1

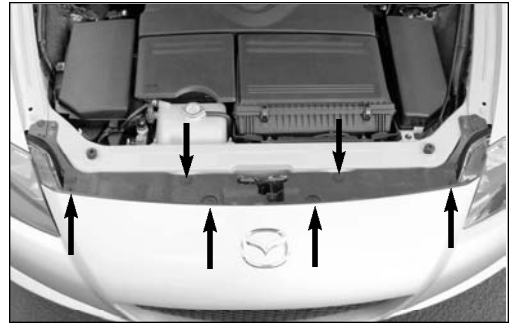


Photo 2

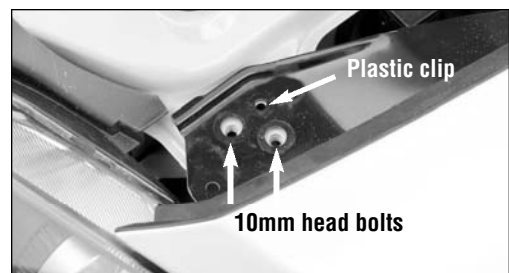


Photo 3



Photo 4

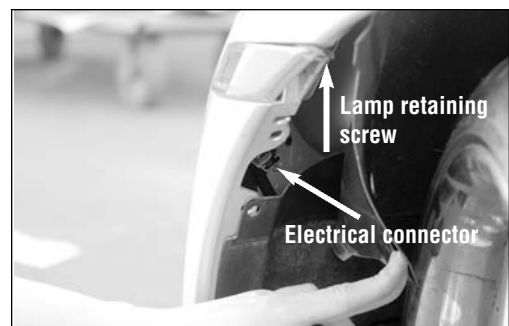
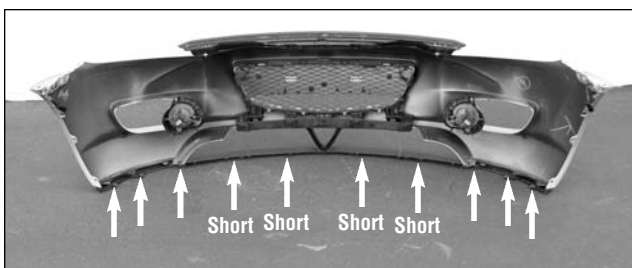


Photo 5



Copyright © 2004



## RX-8 Type II Nose Kit Installation

### PN 67112

#### Tools Required:

- 10mm socket & ratchet/ 10mm wrench
- Phillips head screwdriver
- Flat head screwdriver
- Flat Black Spray Paint

**Estimated time for completion:** 1/2 hr

**People required:** 1

**Before you start the installation process, please read through the following steps thoroughly.**

Your Racing Beat Nose will require final sanding and possibly the application of a small amount of plastic filler to fully surface-finish the piece prior to painting. Always check product for fitment on the vehicle before painting, drilling or cutting. Improper installation may void your warranty. Parts which have been modified, prepped or painted cannot be returned. (The three (3) metal screens that have been installed on the nose have been painted with a power-coat finish. Remove these screens prior to painting the nose.) After the nose has been fitted and painted, proceed with the Installation Instructions.

#### Fitting and Painting Preparation

1. Remove the stock nose from the car as instructed, paying close attention to the location from which each fastener was removed. Remove the foam cover from the bumper bar (this will not be reused).
2. Remove the (3) black metal support brackets from the upper edge of the stock bumper. See Photo A. Remove the (4) 6mm bolts, and the (4) plastic clips. Using these fasteners, attach the brackets to the Racing Beat Bumper. Install the supplied metal retaining clips along the lower edge of the nose as shown in Photo B.
3. If equipped, relocate the fog lights following the instructions on the "Fog Light Relocation Kit" sheet that is supplied with the optional relocation brackets.
4. Remove the Phillips heads screw that retains the white plastic sidemarker brackets (left & right). Remove the 6mm bolt as shown in Photo C. This bolt will be reused to retain the Racing Beat nose.

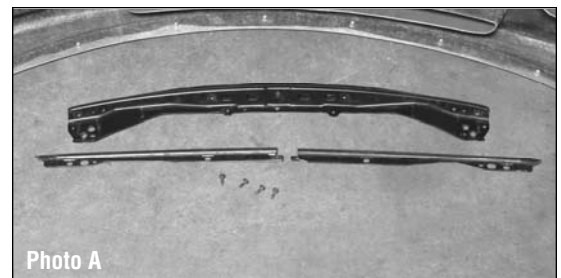


Photo A

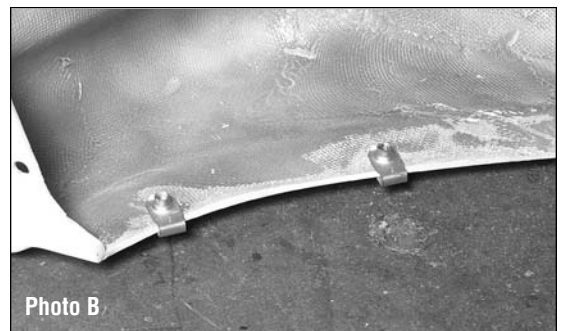


Photo B



Photo C

5. Re-install the metal screens onto the nose.
6. The bumper bar on the chassis will be visible through the mouth opening of the Racing Beat Type II Nose. We recommend that you spray paint this bar "flat black" prior to the final installation of the nose kit.
7. Install the nose onto the chassis. Guide the nose onto the car, and align the nose with the mounting holes. Reuse the (4) 6mm bolts on the upper mounting bracket, but do not reuse the (2) small white plastic alignment pins. Attach the black plastic underbody panel to the nose using the supplied (10) 6mm bolts. Gently lower the hood and evaluate the spacing of the nose/hood. If needed, loosen the upper mounting bolts and move the nose fore or aft. Install the upper plastic panel between the nose and chassis using the original fasteners.
8. Attach the corners of the nose to the chassis in the area of the side marker lights using the original 6mm bolts removed in Step 4. Install the side markers and secure them using the original screws. Reattach the wheel well panels to the nose using the original (4) plastic clips.
9. The installation of the nose is complete.